

## PROJECT: DALY POULTRY FARM, COUNTY TYRONE



### System Specification

1MW Fröling Lambdamat (LM) boiler with hydraulic walking floor fuel store

- 15000l buffer tank with low loss thermal insulation
- 3no circuits of pre-insulated pipe work from boiler house to broiler houses
- High efficiency gas backup system integrated with biomass system
- Remote monitoring and visualisation system

### Fuel

Locally sourced woodchip

### Fuel Consumption

800 Tonnes per annum

HGV with moving floor delivers the woodchip into the large fuel shed



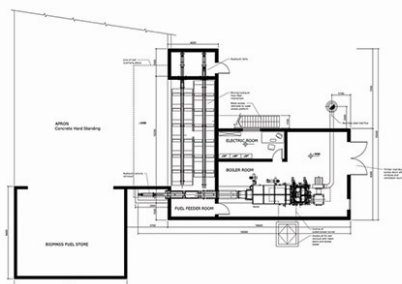
### CO2 Saving

560 Tonnes per annum

### Financial Saving

Support Scheme for Renewable Heat An

agricultural site with a similar heat profile would expect to receive annual payments of approx. €45,000 per annum for 15 years under the support scheme.



### About the Renewable Energy System

The Fröling 1MW Turbomat woodchip boiler is equipped with a high temperature cast iron step grate inside the combustion chamber. Combustion is efficiently controlled from the Fröling SPS 4000 touch screen control system. Primary, Secondary and Tertiary air are injected at separate combustion areas via rotary slide valves and modulating actuators.

### Fuel feed system

The system consists of two hydraulic rams and sliding floor which push the woodchip into a feed auger from where the boiler control unit adjusts the rate of feeding into the combustion chamber.

### Services Rendered

- Design
- Installation
- Commissioning
- Customer free remote access via any web browser
- Service support via free online web browser

### About the Client

Daly Poultry is a family run business located near Dungannon, Co Tyrone. The newly constructed site consists of a number of large chicken broiler houses. These houses are heated via both underfloor heating and fin-tubed piping.

Daly Poultry have utilised a Fröling biomass boiler since 2006 with the installation of a TM 220kW woodchip system at their home site located near Moy, Co. Tyrone.